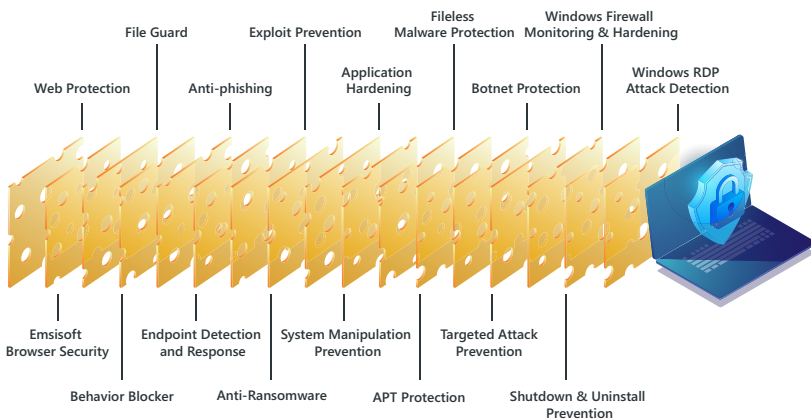


Emsisoft Business Security

Emsisoft Business Security offers a powerful and user-friendly security solution designed for organizations of all sizes. With its multi-layered defense system, Emsisoft Business Security delivers robust protection against today's complex cyber threats.

Multi-Layered Protection

As cyber threats become more advanced and varied, the importance of layered protection cannot be overstated. Emsisoft's multi-layered approach serves as a dynamic defense system, effectively countering a wide range of security challenges.



Web Protection & Browser Security

This layer is the first line of defense, actively preventing access to malicious websites and shielding your business from phishing attempts and malware threats.



Real-time File Guard

The file guard scrutinizes all downloaded and modified files in real-time, backed by AI-driven malware detection to identify and block threats.



Behavior Blocker

Stay protected from new and emerging threats as our Behavior Blocker continuously monitors active processes and issues alerts at the first sign of suspicious activity.



Anti-Ransomware

Protects your files from ransomware by swiftly identifying and blocking encryption attempts to ensure your data remains safe from cyber extortion.

//

I tested other solutions, but they were more cumbersome and required additional man hours to achieve what Emsisoft gives me out of the box. Emsisoft Business Security has an excellent price-performance ratio and makes me feel more protected

//

Massimo R., Emsisoft customer

Award-winning Management Console

The Emsisoft Management Console redefines simplicity in cybersecurity management.

Remote and Intuitive Control

Manage your organization's cybersecurity from anywhere, at any time, using any web-enabled device. Our cloud-based console is a game changer for businesses looking for a centralized, accessible, and easy-to-navigate security management tool.

Effortless Deployment and Maintenance

With features like one-click installation, silent GPO/MSI support, and a clear, informative dashboard, administering your cybersecurity has never been easier.

Automated Scanning

Emsisoft Business Security ships with an advanced command line interface that is optimized to provide high performance in heavy load environments. This automation is not just a feature, it's a strategic tool that streamlines and enhances the efficiency of security operations.

Robust Windows Server Support

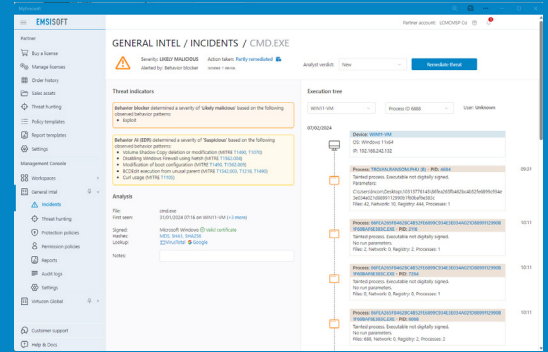
Emsisoft extends its protection to Windows servers, ensuring these critical systems are safeguarded with the same rigor as other endpoints.

Continuous Protection

Emsisoft protection is not dependent on a logged in user to protect your data. The real-time protection begins to operate right from the boot time.

Comprehensive Monitoring

Automatically extends protection to any new devices connected to the server, with real-time alerts for quick response to any threats.



Emsisoft Management Console

"This is a game changer" - McFarland IT Solutions.

What makes us different

- **Advanced Yet User-Friendly**
Emsisoft blends next-generation technology with an intuitive interface, ensuring powerful protection is always within easy reach.
- **Optimal Performance and Value**
Designed to deliver top-tier security without the premium price tag, Emsisoft provides an exceptional balance of functionality and affordability.
- **Unrivaled Customer Support**
Our commitment to customer support excellence means you always have expert assistance at your fingertips.

Embrace the Future of Cybersecurity

Step into a new era of digital protection with Emsisoft Business Security. Visit our website to learn more and start your journey with a free trial, experiencing firsthand the Emsisoft advantage.

Get started today with a free 30-day trial!

[Free Trial](#)

Visit our website to learn more

[emsisoft.com](https://www.emsisoft.com)

